



71 Columbia Street  
Suite No. 500  
Seattle, WA 98104  
Phone: (206)343-9500  
Fax: (206)343-9519

STRUCTURAL and CIVIL  
Coughlin Porter Lundeen  
413 Pine Street, Suite 300  
Seattle, WA 98101  
Phone: (206) 343-0490  
Fax: (206) 343-5991

MECHANICAL and  
ELECTRICAL  
Flack & Kurtz  
600 University St., 5th Floor  
Seattle, WA 98101  
Phone: (206) 342-9900  
Fax: (206) 342-9991

LANDSCAPE  
JGM Landscape Architects  
2800 Northup Way, Suite 100  
Bellevue, WA 98004  
Phone: (425)454-6723  
Fax: (425)294-5253  
Email: jgm@jgm-inc.com

ACOUSTICAL  
Yantis Acoustical Design  
720 Olive Way, Suite 1400  
Seattle, WA 98101-1553  
Phone: (206) 583-0465  
Fax: (206) 583-0615

REVISIONS	DATE



KEYPLAN

# SEATTLE FIRST UNITED METHODIST CHURCH

150 and 168 DENNY WAY,  
SEATTLE, WA 98109

APPROVED FOR THE OWNER \_\_\_\_\_ DATE \_\_\_\_\_

JOB NO: 07777

ISSUE DATE: \_\_\_\_\_

DRAWN BY: ZY

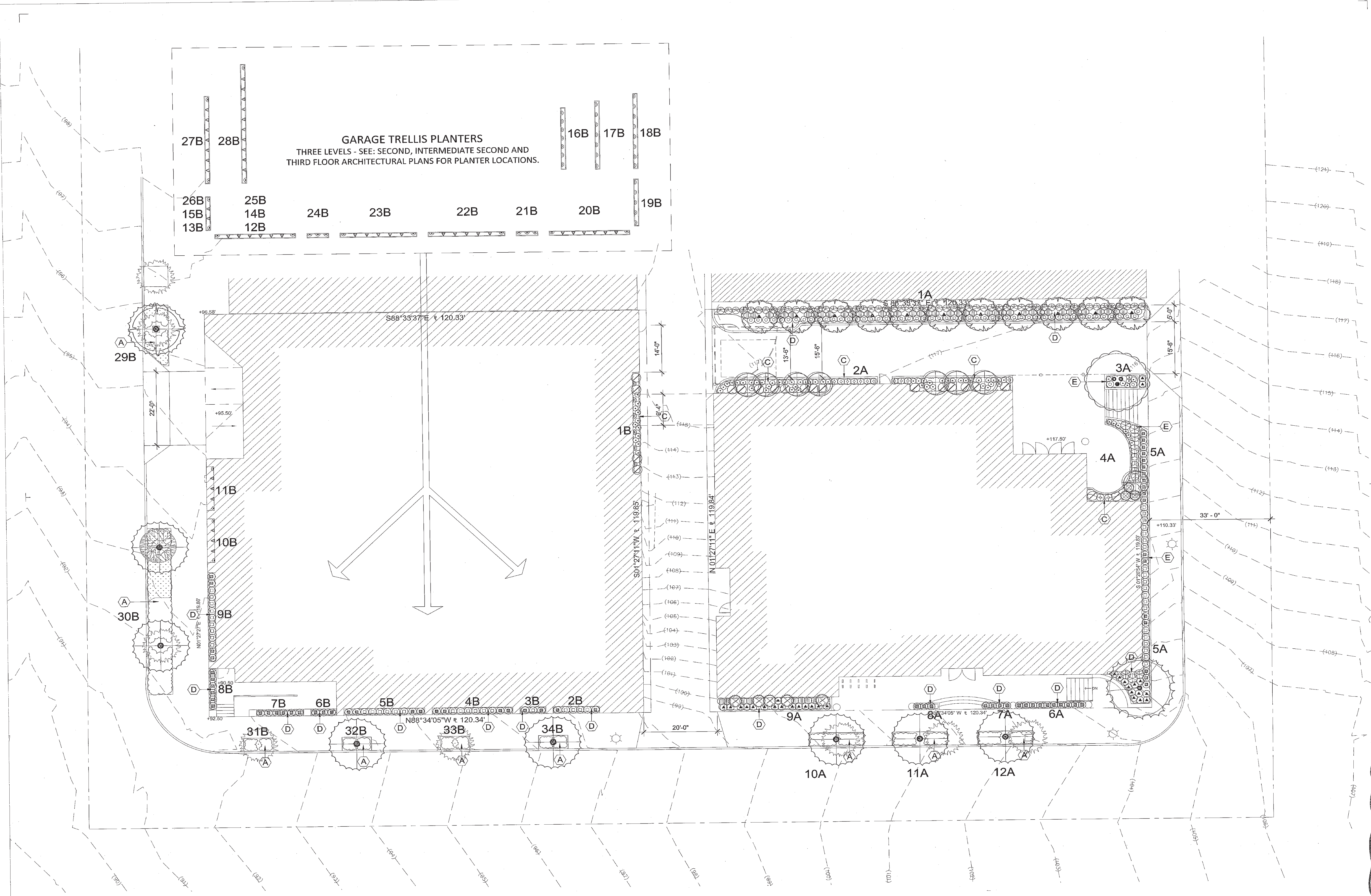
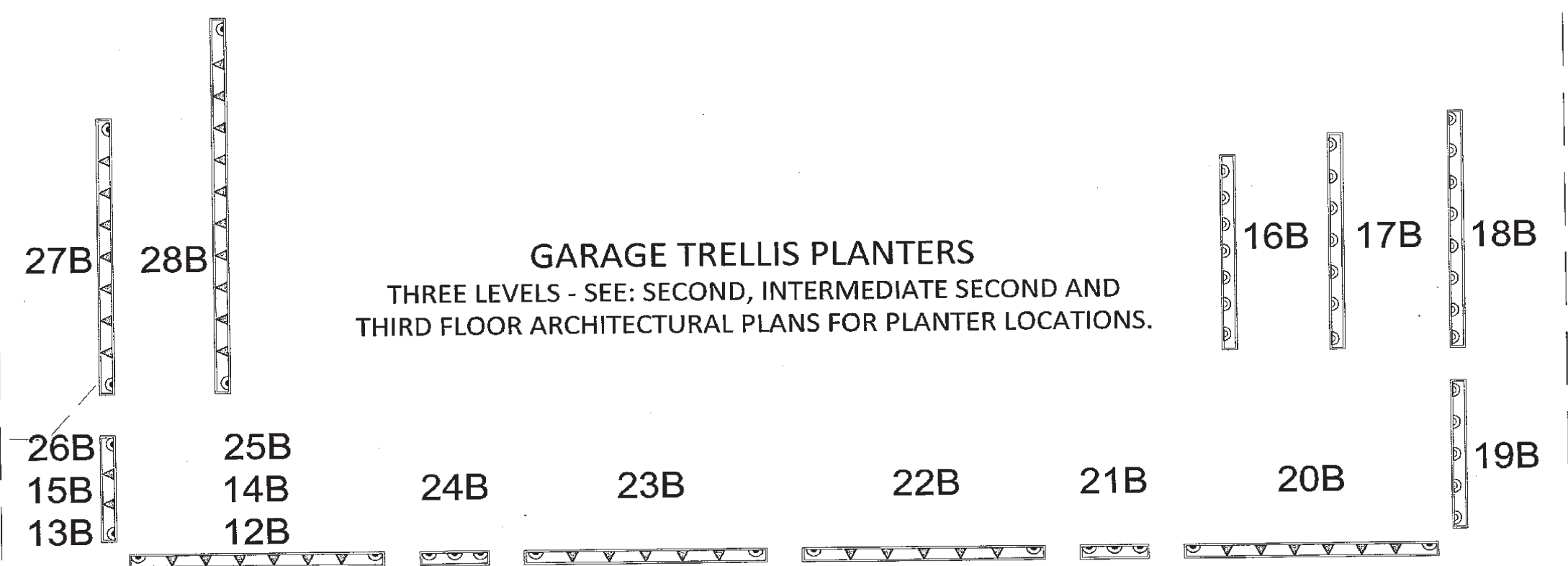
CHECKED BY: CL

## PLANTING PLAN

JUN 27 2008  
Landscape  
Planting

L 1.1

GARAGE TRELLIS PLANTERS  
THREE LEVELS - SEE: SECOND, INTERMEDIATE SECOND AND  
THIRD FLOOR ARCHITECTURAL PLANS FOR PLANTER LOCATIONS.

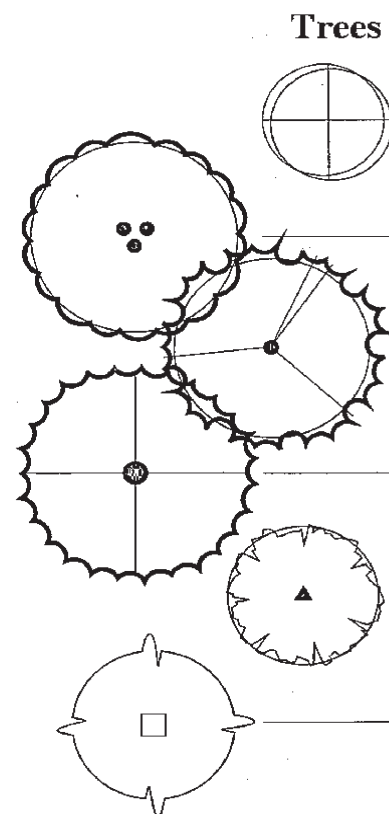


### 1 PLANTING PLAN

FUMC LANDSCAPE PLAN.dwg SCALE: 1" = 10'-0"

MUP SUBMITTAL - REVISED 26 JUNE 2008

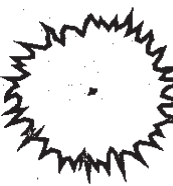
**PLANT SCHEDULE:**



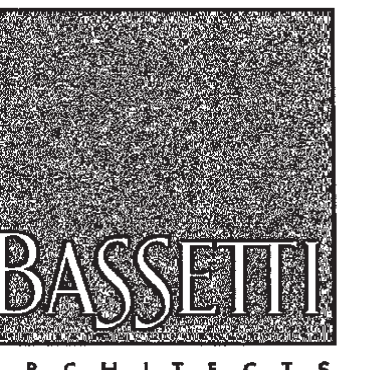
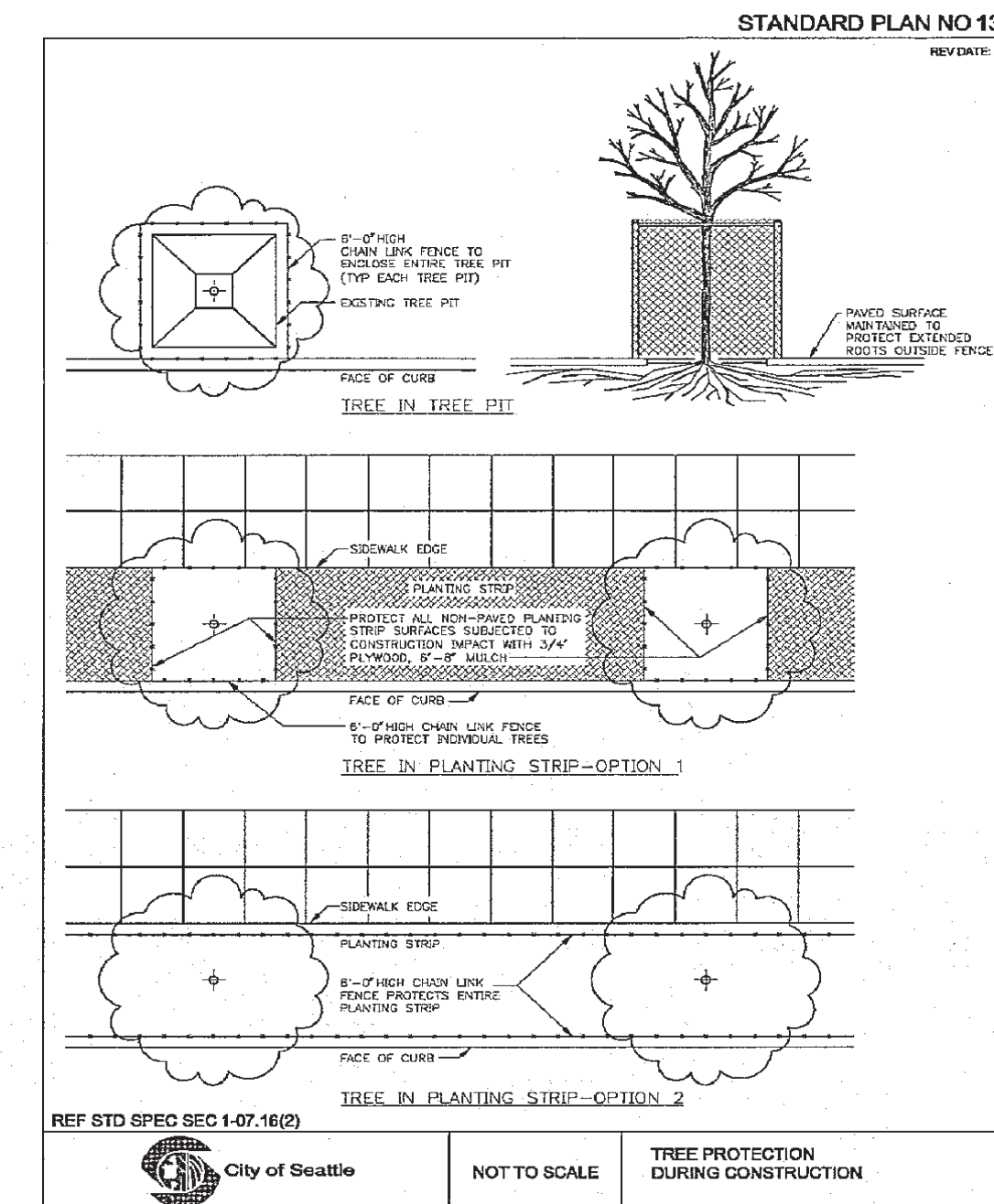
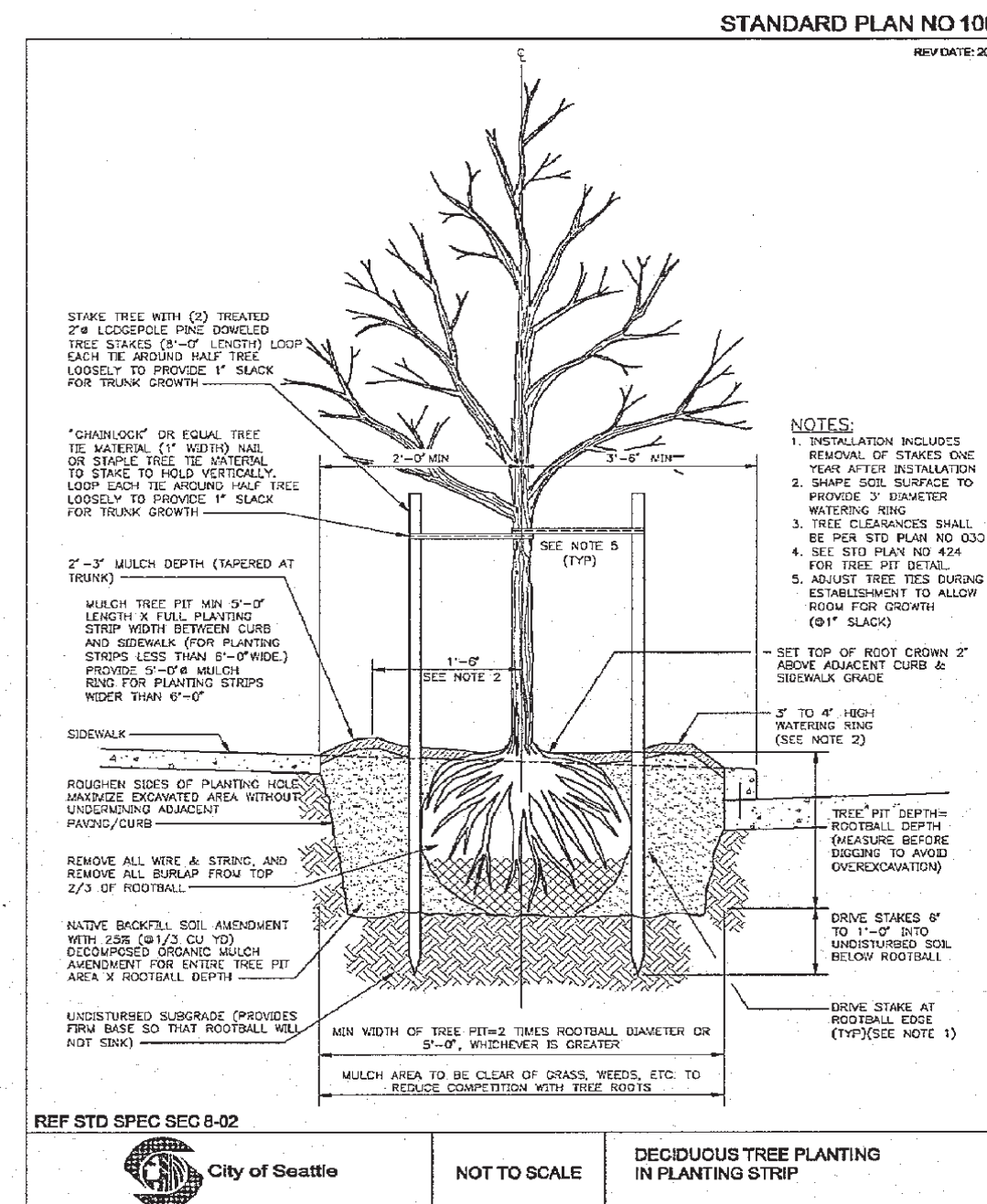
QUANTITY	BOTANICAL/COMMON NAME	SIZE AT PLANTING	SIZE AT MATURITY	DESCRIPTION
<b>Trees</b>				
8	Acer circinnatum / Vine Maple	2" Caliper 7-8' Ht.	25' Ht.	Full, symmetrical shape; multiple trunks.
1	Acer palmatum / Green Japanese Maple	3" Caliper 10-12' Ht.	20' Ht.	Specimen quality; multiple trunks.
1	Davidia involucreta / Dove Tree	3" Caliper 10-12' Ht.	35' Ht.	Specimen quality; multiple trunks.
5	Acer Robrum 'Scarsen' / Scarlet Sentinel Maple	2-1/2" Caliper 12-14' Ht.	50' Ht.	Full, symmetrical shape; branched at 6' ht.
11	Stewartia monadelph / Tall Stewartia	2" Caliper 8-10' Ht.	25' Ht.	Full shape; upright branching.
3	Quercus Robur /	2 1/2" Caliper	50' Ht.	Full, symmetrical shape;
<b>Shrubs</b>				
14	Blechnum spicant / Deer Fern	10 - 12" Ht.	3'	Full shape
29	Cistus salvifolius / Sageleaf Rockrose	10 - 12" Ht.	2'	Full shape
70	Epimedium grandiflorum 'Rose Queen' / Longspur Epimedium	1 gallon container.	1'	Full shape
53	Hebe 'Autumn Glory' / Hebe	10 - 12" Ht.	2'	Full shape
5	Lavandula angustifolia / English Lavender	15 - 18" Ht.	3'	Full shape
3	Rhododendron occidentale / Western Azalea	20 - 24" Ht.	6'	Full shape
7	Ribes sanguinum / Red-flowering Current	18 - 20" Ht.	4'	Full shape
49	Rosa rugosa 'Frau Dagmar Hastrup' / 20 - 24" Ht. Sea Tomato	4'	4'	Full shape
21	Sarcococca rusifolia / Sarcococca	18 - 20" Ht.	4'	Full shape
57	Viburnum davidi / David Viburnum	12 - 14" Ht.	3'	Full shape
61	Viburnum tinus 'Spring Bouquet' / Laurustinus	20 - 24" Ht.	6'	Full shape
59	Helictotrichon sempervirens / Blue Oat Grass	10 - 12" Ht.	2'	Full shape

**PLANT SCHEDULE:**

QUANTITY	BOTANICAL/COMMON NAME	SIZE AT PLANTING	SIZE AT MATURITY	DESCRIPTION
<b>Groundcovers</b>				
A	Arctostaphylos uva-ursi / Kinnikinnick	4" pot	6"	Full shape; 18" on center triangular spacing.
B	Ceanothus gloriosus 'Anchor Bay' / Ceanothus	1 gallon container	12"	Full shape; 24" on center triangular spacing.
C	Vancouveria hexandra / American Barrenwort	4" pot	18"	Full shape; 18" on center triangular spacing.
D	Rubus pentalobus / Bramble	4" pot	4"	Full shape; 18" on center triangular spacing.
E	Liriope spicata / Creeping Lily-Turf	1 gallon container.	10"	Full shape; 24" on center
<b>Vines</b>				
6	Parthenocissus tricuspidata / Boston Ivy	1 gallon container	50'	Plant vine against base of wall.
32	Lonicera sempervirens / Trumpet Honeysuckle	1 gallon container	50'	Plant vine against trellis support.
57	Campsis radicans / Trumpet Creeper	1 gallon container	30'	Plant vine against trellis support.
28	Akebia quinata / Fiveleaf akebia	1 gallon container	30'	Plant vine against trellis support.



Indicates existing trees and vegetation. Save and protect.



71 Columbia Street  
Suite No. 500  
Seattle, WA 98104  
Phone: (206)340-9500  
Fax: (206)340-9519

STRUCTURAL and CIVIL  
Coughlin Porter Lundeen

413 Pine Street, Suite 300  
Seattle, WA 98101  
Phone (206) 343-0480  
Fax (206) 343-5691

MECHANICAL and ELECTRICAL  
Flack & Kurtz  
600 University St., 5th Floor  
Seattle, WA 98101  
Phone (206) 342-8900  
Fax (206) 342-9901

LANDSCAPE  
JGM Landscape Architects  
2800 Northrup Way, Suite 100  
Bellevue, WA 98004  
Phone: (425)454-5723  
Fax: (425)284-4253  
Email: jgm@jgm-inc.com

ACOUSTICAL  
Yantis Acoustical Design  
720 Olive Way, Suite 1400  
Seattle, WA 98101-1853  
Phone (206) 583-0455  
Fax (206) 583-0615

REVISIONS	DATE



**SEATTLE FIRST UNITED METHODIST CHURCH**  
150 and 165 DENNY WAY, SEATTLE, WA 98108

APPROVED FOR THE OWNER \_\_\_\_\_ DATE \_\_\_\_\_  
JOB NO: 07777  
ISSUE DATE: \_\_\_\_\_  
DRAWN BY: ZY  
CHECKED BY: CL

**PLANTING SCHEDULE AND DETAILS**

JUN 27 2008  
150 and 165 DENNY WAY, SEATTLE, WA 98108

L 1.2

MUP SUBMITTAL - REVISED 26 JUNE 2008

