



## HOLMAN RD NW AND 13TH AVE NW NEW SIGNAL Construction Delayed

Construction of crossing improvements for the intersection of Holman Rd NW and 13th Ave NW has been delayed until materials can be acquired, which is anticipated in October. Once work begins, it will last approximately 6 weeks. We'll let you know at least 2 weeks before the start of construction. During this work, we'll install:

- A new pedestrian and bike signal on Holman Rd NW at 13th Ave NW
- A new crosswalk at this intersection
- Additional lighting at the crosswalk

In the meantime, as soon as Monday, August 27, work will begin on a wider ADA-compliant pathway through from the new crosswalk through Crown Hill Park to NW 92nd St.\*

### WHAT TO EXPECT DURING CONSTRUCTION

- Construction hours on weekdays, 7 AM – 4 PM
- Closures of 13th Ave NW and NW 92nd St at Holman Rd NW
- Lane closures along Holman Rd NW
- Temporary pathway, and sidewalk closures
- Detoured walking and biking routes
- Possible impacts to bus stops near the intersection of Holman Rd NW and 13th Ave NW
- Parking and loading restrictions
- Noise, dust, truck activity, and vibration
- Pedestrian bridge will remain open during construction

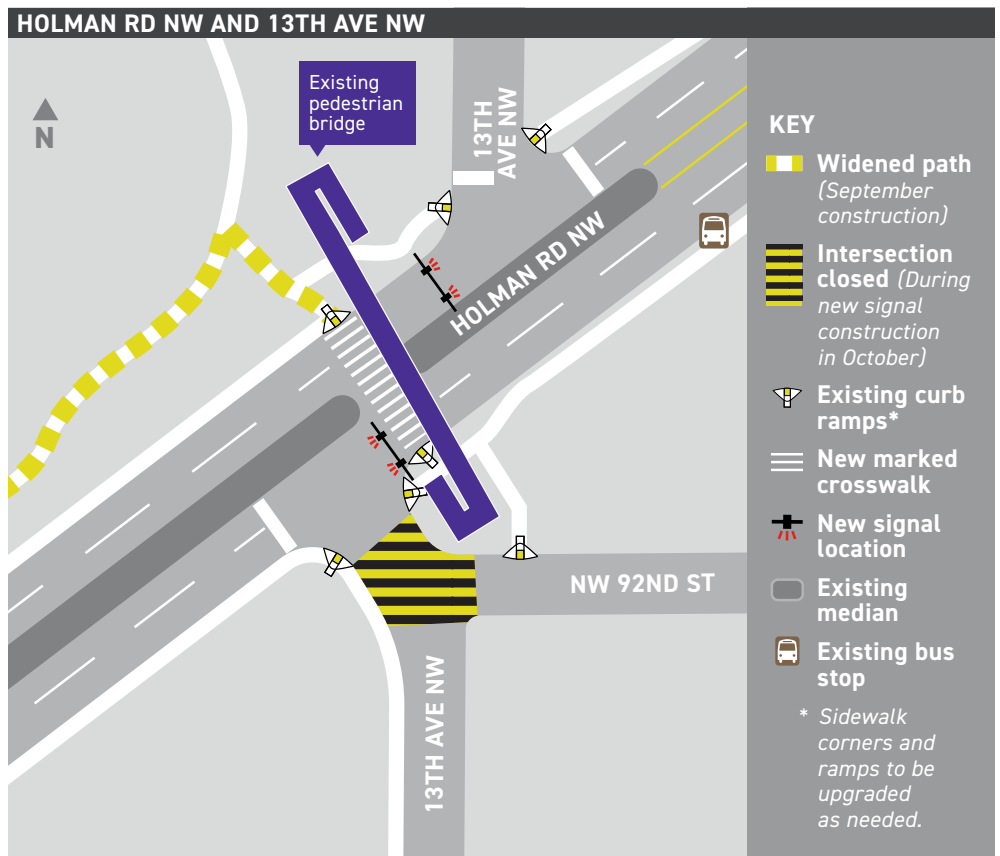
\*Construction schedule is subject to change

### PROJECT BACKGROUND

In 2016, the Holman Rd NW and 13th Ave NW Signal project was one of 12 selected by the Levy to Move Seattle Oversight Committee to be funded through SDOT's Neighborhood Street Fund (NSF) program. The NSF program funds projects requested by the community. This project is being undertaken in conjunction with the Seattle Neighborhood Greenway program, which is working to establish a neighborhood greenway and school safety route on NW 92nd St between Whitman Middle School, on 15th Ave NW, and 1st Ave NW.

To learn more about the project or request translations, call (206) 775-8720.

Estamos construyendo un proyecto de transporte propuesto por nuestros vecinos a fin de que sea mas seguro para que las personas caminen y monten bicicleta y asimismo fortalecer a la comunidad. Para obtener mayor informacion acerca del proyecto o para solicitar transporte llamar a: (206) 775-8720.



### PROJECT INFORMATION AND CONTACT

[www.seattle.gov/transportation/NSFHolman.htm](http://www.seattle.gov/transportation/NSFHolman.htm)  
NSFHolman@seattle.gov | (206) 775-8720  
Outreach Lead: Peter Kitchen