



FACT SHEET

HOLMAN RD NW & 13TH AVE NW NEW SIGNAL

March 2017

PROJECT BACKGROUND

The Seattle Department of Transportation (SDOT) plans to remove the pedestrian bridge that crosses over Holman Rd NW at 13th Ave NW and install a traffic signal at the intersection for people walking and biking. There are currently no signalized crossings along the half mile stretch between Holman Rd NW and 6th Ave NW (where the QFC is located) and the top of the hill at Holman Rd NW and Mary Ave NW.

In 2016, the Holman Rd NW and 13th Ave NW Signal project was one of 12 selected by the Levy to Move Seattle Oversight Committee to be funded through SDOT's Neighborhood Street Fund (NSF) program. The NSF program funds projects requested by the community. When complete, this project will improve safety, predictability, and accessibility for people walking, biking, and riding transit along Holman Rd NW.

PROJECT ELEMENTS

- A new pedestrian and bicycle signal at Holman Rd NW at 13th Ave NW
- Removal of the existing pedestrian bridge
- Possible new public plaza space at the northeast corner of this intersection (where the pedestrian bridge stairs are currently located)
- Additional lighting at the bus stop on Holman Rd NW

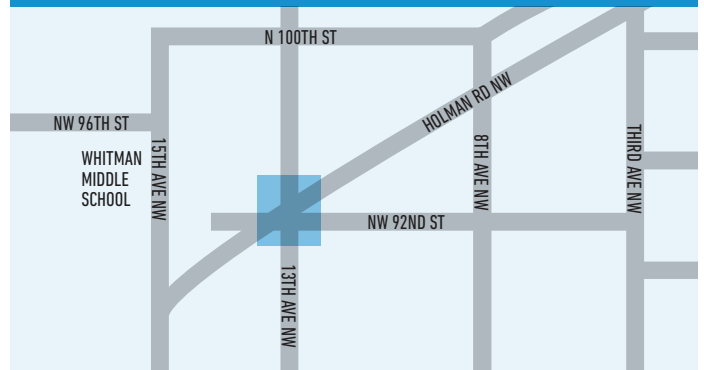
PROJECT BENEFITS

- Additional opportunities for all travelers to comfortably cross the intersection
- Improved sightlines for people driving
- Make the Holman Road NW corridor a viable route for oversized vehicles
- Increased visibility of transit travelers



Existing conditions at Holman Rd NW and 13th Ave NW intersection

PROJECT LOCATION



WE WANT TO HEAR FROM YOU!

- What do you like about the design so far? Do you have any concerns?
- What would you like to see at the potential plaza area at the northeast corner? How would you want to use this space?
- What else would you like us to know about how you use this area? What improvements would you like to see?

PROJECT INFORMATION AND CONTACT

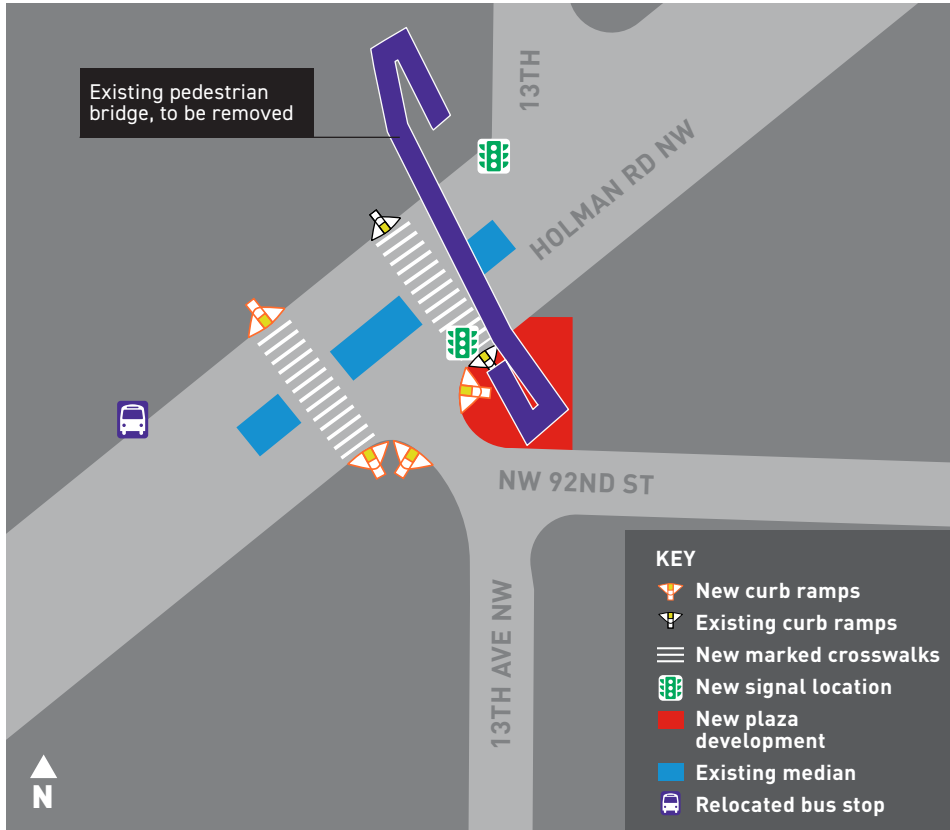
www.seattle.gov/transportation/NSFHolman.htm
NSFHolman@seattle.gov | (206) 733-9361
NSF Outreach Lead: Kristin Anderson



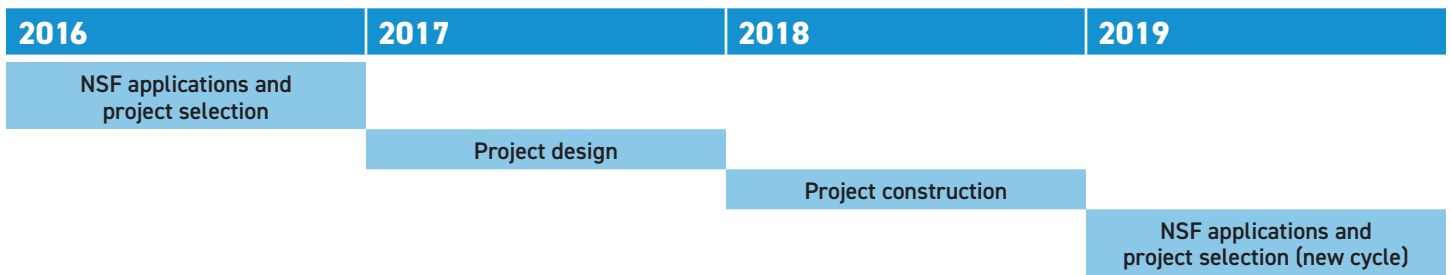
Seattle
Department of
Transportation



EARLY DESIGN OPTION



SCHEDULE



FUNDING

Funding comes from the 2015 voter-approved, nine-year Levy to Move Seattle, which will improve safety for all travelers, maintain streets and bridges, and invest in reliable, affordable travel options for a growing city. The levy includes \$24 million to continue the Neighborhood Street Fund program over the nine years.

SDOT's Freight Spot Improvement Program has committed funding for the removal of the existing pedestrian bridge.

STAY INVOLVED!

We are committed to keeping you informed throughout the life of the project. Feel free to contact us, and be on the lookout for more information.

Sign up to receive email updates:
NSFHolman@seattle.gov

PROJECT INFORMATION AND CONTACT

www.seattle.gov/transportation/NSFHolman.htm
NSFHolman@seattle.gov | (206) 733-9361
 NSF Outreach Lead: Kristin Anderson



Seattle
Department of
Transportation

